

CATALOGUE NO. 1307.1
EMBARGOED UNTIL 11.30 A.M. 31 MAY 1995

**ECONOMIC INDICATORS, NEW SOUTH WALES
MAY 1995**

MAIN FEATURES

Employment

Seasonally adjusted, the estimated number of employed persons in NSW in April 1995 was 2,738,200, an increase of 1.2% from March 1995 and an increase of 4.3% since April 1994. Nationally, the seasonally adjusted number of employed persons increased by 1.1% between March and April 1995 and by 5.1% over the last 12 months.

Unemployment

The seasonally adjusted estimate of unemployed people in NSW in April 1995 was 228,800. This was 7.5% lower than in March 1995 and 22.2% lower than April 1994. The seasonally adjusted unemployment rate in NSW for April 1995 was 7.7% compared the national rate of 8.3%.

Building Approvals

The seasonally adjusted number of new dwelling units approved in NSW in March 1995 (3,804) fell by 15.2% from the previous month (4,487). The fall was widespread, with numbers for Houses and Other residential buildings recording significant decreases.

New Motor Vehicle Registrations

The seasonally adjusted figure for new motor vehicle registrations in NSW fell by 6.4% from 19,395 in February 1995 to 18,160 in March 1995.

Finance

The value of personal and commercial commitments made in NSW in March 1995 increased by 25.7% and 49.9% respectively over February 1995.

NOTES

This publication provides information on a wide range of economic indicators which are the latest available at the time of publication. In a number of cases, figures appearing in this summary are preliminary and are subject to revision in subsequent issues.

For detailed explanatory notes and definitions for the items shown in this publication, readers are referred to the specific ABS publications.

Current publications produced by the ABS are listed in the *Catalogue of Publications* (1101.0). A *Publications Advice* (1105.0) is issued on Tuesdays and Fridays which lists publications to be released in the next few days. These publications are available from any ABS office.

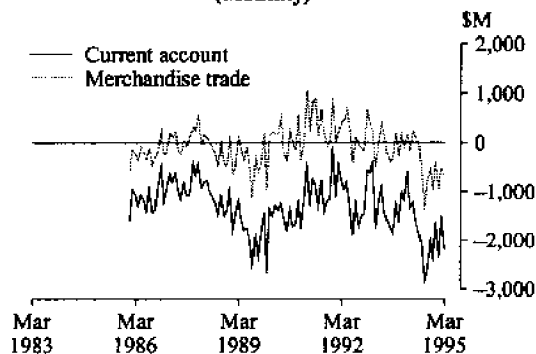
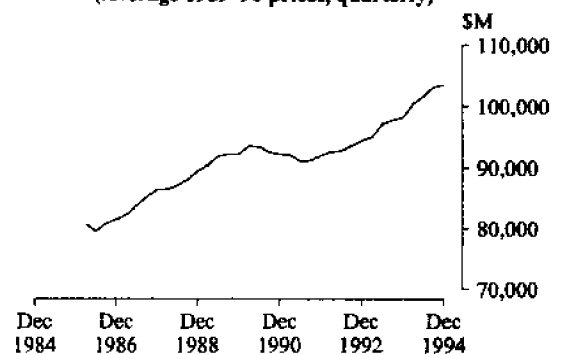
GREG BRAY
Deputy Commonwealth Statistician

INQUIRIES:

- for further information about statistics in this publication and the availability of related unpublished statistics, contact John Petersen on Sydney (02) 268 4586 or any ABS office.
- for information about other ABS statistics and services please contact Information Services on Sydney (02) 268 4611 or any ABS office.

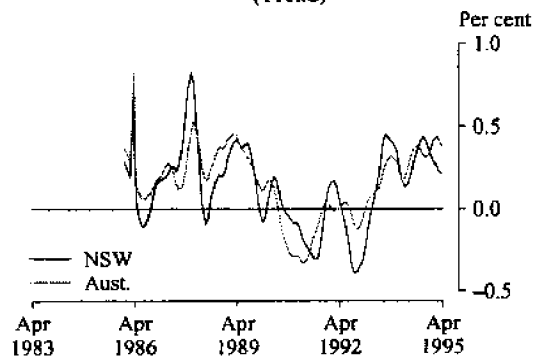
NATIONAL ECONOMY

Indicator	Unit	Latest period	Change over prior period	Change over year			
National Accounts percentage change, average 1989-90 prices, (seasonally adjusted)—							
Gross non-farm product	per cent	Dec. qtr 94	0.5	6.6			
Gross domestic product	per cent	Dec. qtr 94	0.4	5.5			
Figures for preceding periods							
Indicator	Unit	Latest period	Latest figure	One period ago	Two periods ago	Three periods ago	Figure one year ago
Balance of payments—							
Merchandise exports	\$m	Mar. 95	6,119	5,118	4,885	5,513	5,633
Merchandise imports	\$m	Apr. 95	-5,695	-6,812	-5,611	-5,788	-4,927
Balance on merchandise trade	\$m	Mar. 95	-693	-493	-903	-408	-160
Balance on goods and services	\$m	Mar. 95	-689	-105	-829	-396	-139
Balance on current account	\$m	Mar. 95	-2,188	-1,489	-2,354	-1,625	-1,337
Balance on current account (seasonally adjusted)	\$m	Mar. 95	-2,319	-2,115	-2,220	-2,323	-1,280
Terms of trade for goods and service—							
Index (seasonally adjusted) 1989-90 = 100		Dec. qtr 94	91.2	89.1	88.4	87.6	87.8
Exchange Rates at end of period—							
SUS/\$A		Mar. 95	0.7280	0.7395	0.7583	0.7768	0.7008
Trade weighted index of value \$A May 1970 = 100		Mar. 95	50.7	52.9	54.5	56.2	52.1
Interest Rates—							
Prime rate (Source: Reserve Bank)	per cent	May 95	10.60-10.75	10.60-10.75	10.65-10.75	10.60-10.75	8.95-9.00

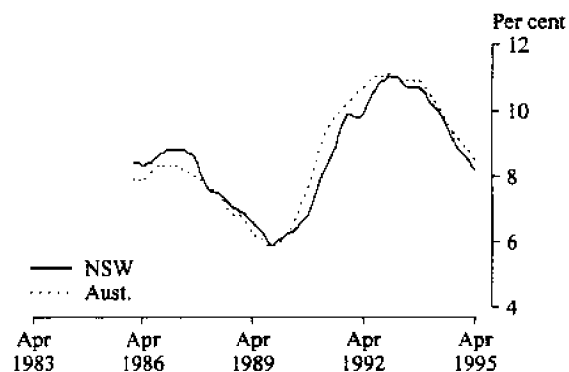
BALANCE OF PAYMENTS
AUSTRALIA
(Monthly)GROSS DOMESTIC PRODUCT, AUSTRALIA
SEASONALLY ADJUSTED
(Average 1989-90 prices, quarterly)NEW SOUTH WALES IN RELATION TO OTHER STATES AND AUSTRALIA
(per cent)

Indicator	Latest period	NSW	Vic.	Qld	SA	WA	Tas.	Aust.
Unemployment rate (seasonally adjusted)	Apr. 95	7.7	8.7	8.3	9.9	7.3	9.9	8.3
Percentage change from previous year—								
Employed persons	Apr. 95	4.3	4.4	7.9	2.2	6.4	4.1	5.0
Consumer price index: all groups	Mar. qtr 95	4.2	3.4	4.5	3.7	4.1	3.8	3.9
Average weekly employee earnings:								
full-time adult ordinary time (trend estimates)	Feb. 95	5.8	4.1	2.4	2.1	4.8	1.9	4.2
Retail turnover (trend estimates)	Mar. 95	4.2	9.6	7.6	9.3	2.9	0.2	6.3
New motor vehicle registrations	Mar. 95	11.3	10.6	4.7	10.4	-1.9	13.4	8.7
Dwelling units approved	Mar. 95	-11.7	-13.0	-30.0	-11.9	-27.6	-13.5	-20.6
Value of non-residential building approved	Mar. 95	52.7	-20.1	33.0	163.6	0.9	62.3	23.4
Value of all buildings approved	Mar. 95	20.1	-13.2	-19.2	44.3	-14.1	0.1	-2.9
Value of engineering construction work done	Dec. qtr 94	17.3	5.7	9.4	-9.8	-23.2	-32.4	4.7
Room occupancy rate in licensed hotels and motels etc.	Dec. qtr 94	6.7	11.8	2.6	5.4	6.6	2.6	6.3
Actual private new capital expenditure	Dec. qtr 94	37.9	-12.5	32.0	81.0	22.7	50.4	21.2

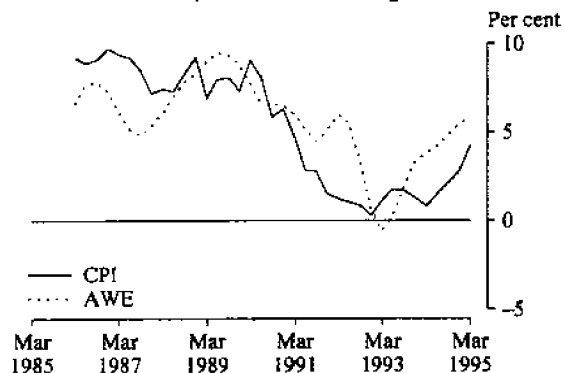
MONTHLY CHANGE IN NUMBER OF PERSONS EMPLOYED
(Trend)



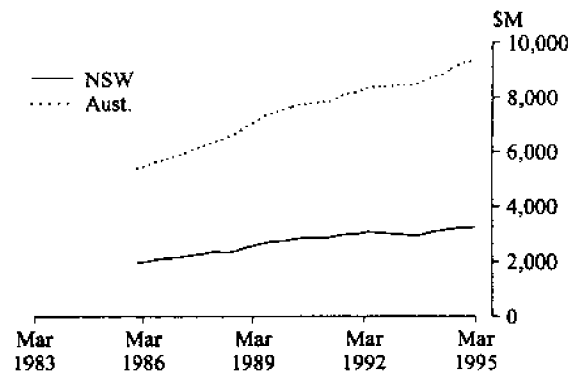
UNEMPLOYMENT RATE
(Trend)



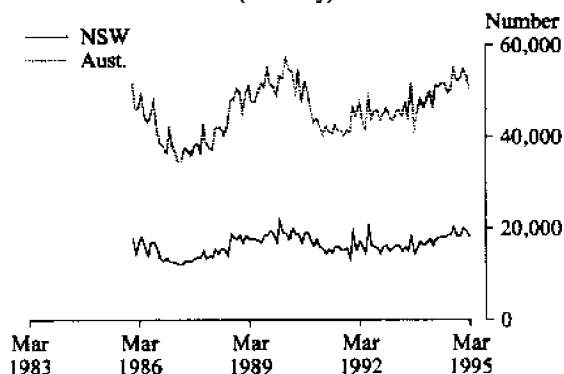
PRICES AND EARNINGS, NSW
(Annual rate of change)



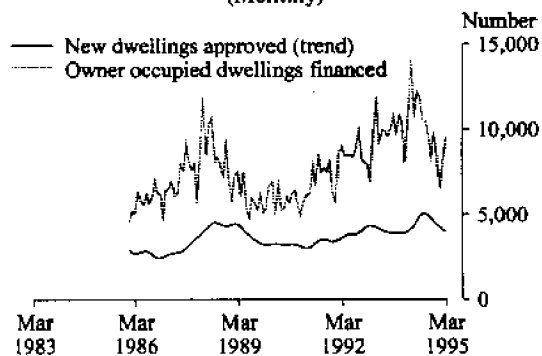
RETAIL TURNOVER
(Trend, monthly)



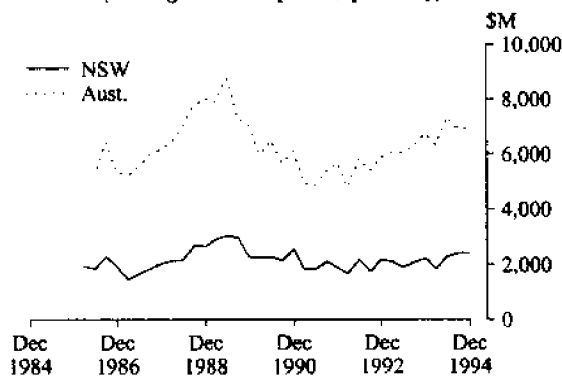
NEW MOTOR VEHICLES REGISTERED
(Monthly)



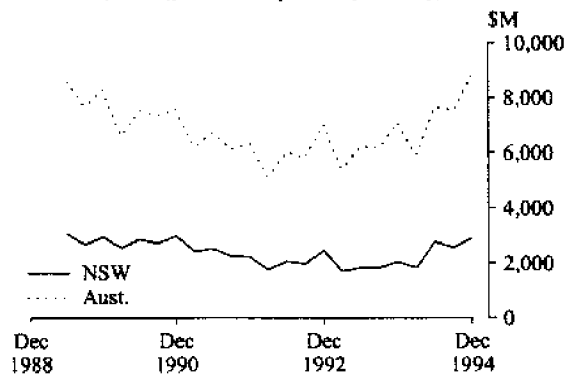
NEW DWELLINGS APPROVED AND HOUSING FINANCE COMMITMENTS, NSW
(Monthly)



VALUE OF ALL BUILDINGS COMMENCED
(Average 1989-90 prices, quarterly)



PRIVATE NEW CAPITAL EXPENDITURE
(Average 1989-90 prices, quarterly)



NEW SOUTH WALES IN RELATION TO AUSTRALIA

Indicator	Unit	Latest period	Latest figure	New South Wales		Australia		
				Change from prior period (per cent)	Change from same prior year (per cent)	Latest figure	Change from prior period (per cent)	Change from same prior year (per cent)
Population								
Estimated resident population	'000	Sept. qtr 94	6,069	0.29	0.94	17,897	0.30	1.07
Civilian population aged 15 years and over	'000	Apr. 95	4,787	0.10	1.14	14,089	0.13	1.34
Labour Force								
Employed persons—full-time (original series)	'000	Apr. 95	2,101	1.0	3.4	6,184	0.9	4.3
—total (original series)	'000	Apr. 95	2,743	1.1	4.3	8,231	0.8	5.0
—total (seasonally adjusted)	'000	Apr. 95	2,738	1.2	4.3	8,238	1.1	5.1
Unemployed persons—(original series)	'000	Apr. 95	226	-12.7	-22.3	743	-8.9	-15.9
—(seasonally adjusted)	'000	Apr. 95	229	-7.5	-22.2	744	-3.7	-15.8
Labour force (seasonally adjusted)	'000	Apr. 95	2,967	0.4	1.6	8,982	0.7	2.9
Participation rate (seasonally adjusted)	per cent	Apr. 95	62.0	0.3	0.5	63.7	0.6	1.6
Unemployment rate (seasonally adjusted)	per cent	Apr. 95	7.7	-7.9	-23.4	8.3	-4.4	-18.2
Job vacancies	'000	Feb. 95	24	-17.6	33.4	57	-13.3	24.9
Weekly paid overtime per employee (a)	hours	Feb. 95	7.2	-2.8	-6.6	7.3	-2.8	0.7
Average Weekly Employee Earnings								
Full-time adult ordinary time earnings (trend estimates)	\$	Feb. 95	661.80	1.3	5.8	636.00	1.0	4.2
All employees total earnings (trend estimates)	\$	Feb. 95	568.60	0.7	4.8	544.40	0.4	3.4
Industrial Disputes—Working days lost	'000	Jan. 95	2.0	-75.9	-48.7	12.3	-76.3	127.8
Consumer Price Index, All Groups	1989-90=100	Mar. qtr 95	113.7	1.7	4.2	114.7	1.7	3.9
Retail Turnover (trend estimates)	\$m	Mar. 95	3,269	0.1	4.2	9,365	0.2	6.3
New Motor Vehicle Registrations (seasonally adjusted)	No.	Mar. 95	18,160	-6.4	12.5	50,439	-5.3	9.4
Passenger vehicles (seasonally adjusted)	No.	Mar. 95	15,253	-7.4	12.2	41,764	-6.0	9.3
Other motor vehicles (excl. motor cycles) (seas. adj.)	No.	Mar. 95	2,907	-0.6	14.0	8,675	-1.4	10.2
Production								
Clay bricks (seasonally adjusted) (b)	million	Mar. 95	56.9	-9.2	-5.2	140	-10.0	-6.6
Electricity (seasonally adjusted)	mill. kWh	Mar. 95	5,113	2.2	3.6	13,696	-0.8	1.6
Gas (seasonally adjusted) (b)	terajoules	Mar. 95	8,295	4.0	1.4	52,067	1.1	-0.9
Overseas Trade								
Imports	\$m	Apr. 95	2,620	-12.7	15.5	5,750	-15.0	14.2
Exports, Australian produce	\$m	Mar. 95	1,336	15.3	0.7	5,915	19.8	9.7
Tourism								
Overseas visitor short-term arrivals	'000	Mar. 95	143	7.1	6.0	319	5.0	4.9
Resident overseas short-term departures	'000	Mar. 95	62	-12.3	-3.0	152	-8.5	1.0
Licensed hotels, motels etc. with facilities—								
Guest nights	'000	Dec. qtr 94	5,410	0.6	5.6	15,857	0.3	5.6
Room occupancy rate	per cent	Dec. qtr 94	58.8	2.8	6.7	59.0	1.0	6.3
Building								
Approvals—								
New dwelling units (seasonally adjusted)	No.	Mar. 95	3,804	-15.2	-9.6	12,830	-4.3	-17.9
Value of new residential building (seasonally adj.)	\$m	Mar. 95	441	8.1	19.1	1,174	-1.2	-11.2
Value of non-residential building	\$m	Mar. 95	258	-28.9	52.7	737	-18.7	23.4
Value of all building	\$m	Mar. 95	798	-0.1	20.1	2,198	1.2	-2.9
Commencements—								
New dwelling units	No.	Dec. qtr 94	13,201	-10.4	13.8	45,646	-7.5	2.8
Value of new residential buildings (c)	\$m	Dec. qtr 94	1,399	-3.7	28.1	4,087	-6.6	9.9
Value of non-residential building (c)	\$m	Dec. qtr 94	724	2.5	-19.1	2,226	11.9	-9.6
Value of all building (c)	\$m	Dec. qtr 94	2,440	-0.1	8.9	6,961	0.1	3.0
Value of work done in period (c)	\$m	Dec. qtr 94	2,429	4.5	6.5	7,368	4.0	9.5
Engineering Construction								
Private contractors—								
Value of work commenced	\$m	Dec. qtr 94	924	52.0	61.4	1,828	2.1	13.6
Value of work done	\$m	Dec. qtr 94	537	0.4	5.9	1,625	-5.9	-5.3
Value of work yet to be done	\$m	Dec. qtr 94	1,357	38.3	44.2	3,169	6.7	24.1
Value of work done by public sector	\$m	Dec. qtr 94	583	31.4	30.4	1,514	20.7	18.2
Finance								
Housing finance for owner occupation—secured								
commitments to individuals by significant lenders	\$m	Mar. 95	1,381	19.6	-27.0	3,919	15.9	-27.1
Personal finance commitments—significant lenders	\$m	Mar. 95	897	25.7	2.9	2,685	23.3	6.3
Commercial finance commitments—significant lenders	\$m	Mar. 95	4,697	49.9	20.5	9,550	40.9	0.7
Savings balances at end of month—								
All banks (d) (Source: Reserve Bank)	\$m	Mar. 95	113,649	1.9	(e)	254,475	1.0	7.8
Building societies	\$m	Mar. 95	3,334	0.6	11.4	11,897	0.6	13.5
Credit unions	\$m	Mar. 95	5,170	1.7	11.9	11,781	1.8	10.8
Actual New Fixed Capital Expenditure (f)								
New buildings and structures	\$m	Dec. qtr 94	3,077	12.8	37.9	9,331	17.6	21.4
Equipment, plant and machinery	\$m	Dec. qtr 94	599	-7.9	37.6	2,288	18.0	-1.9
	\$m	Dec. qtr 94	2,477	19.4	38.0	7,042	17.5	31.6

(a) Average weekly overtime hours for those employees who were paid for overtime. (b) Includes Australian Capital Territory. (c) Average of 1989-90 prices. (d) Average of weekly deposit balances. (e) Unavailable owing to revisions being done nationally only. (f) By private enterprises.

